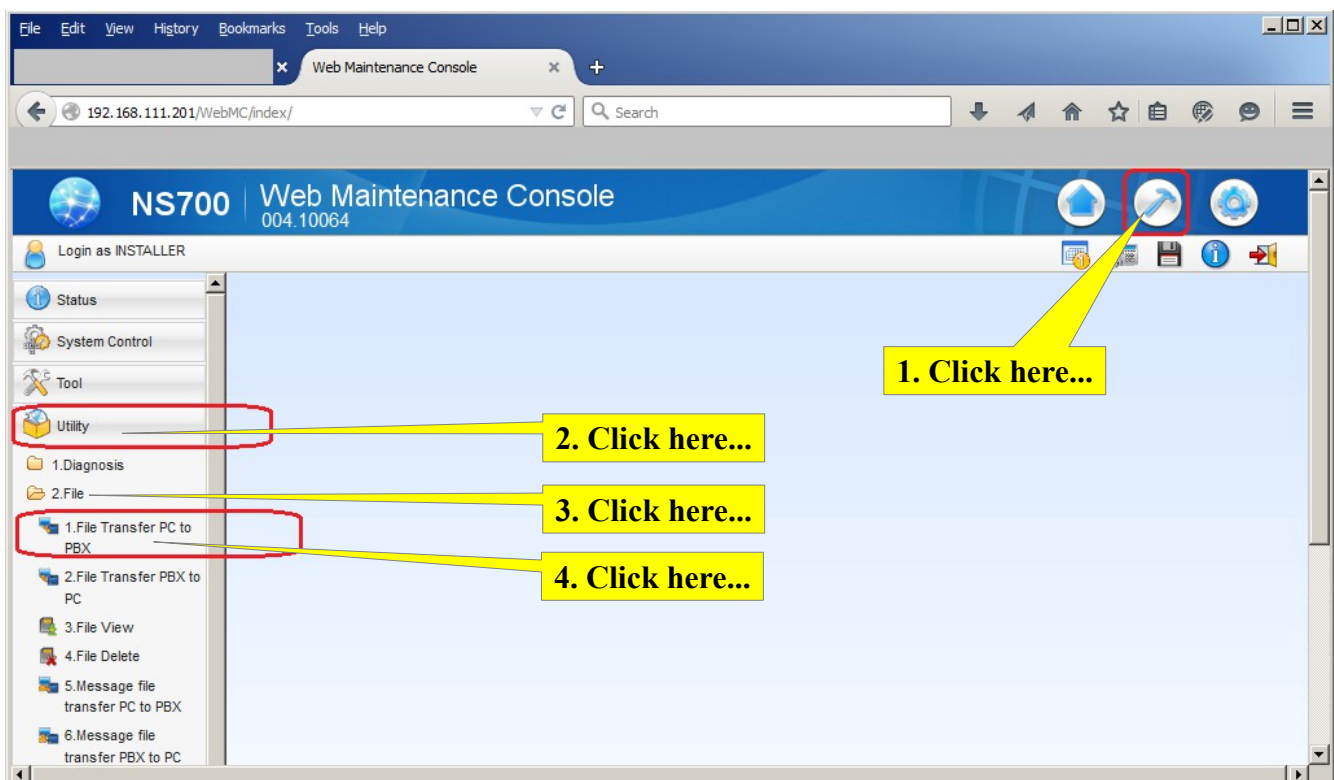


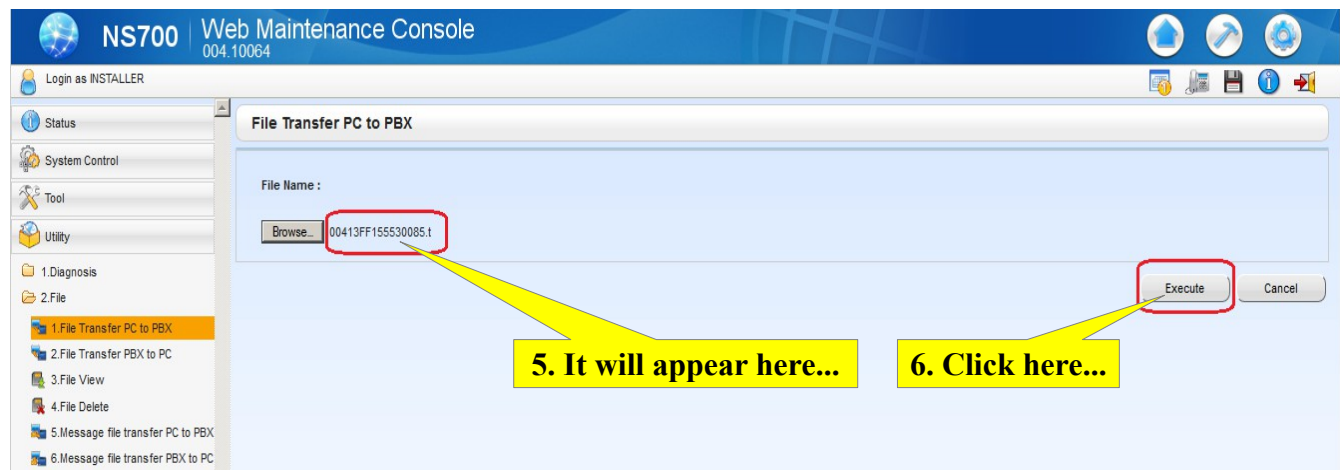
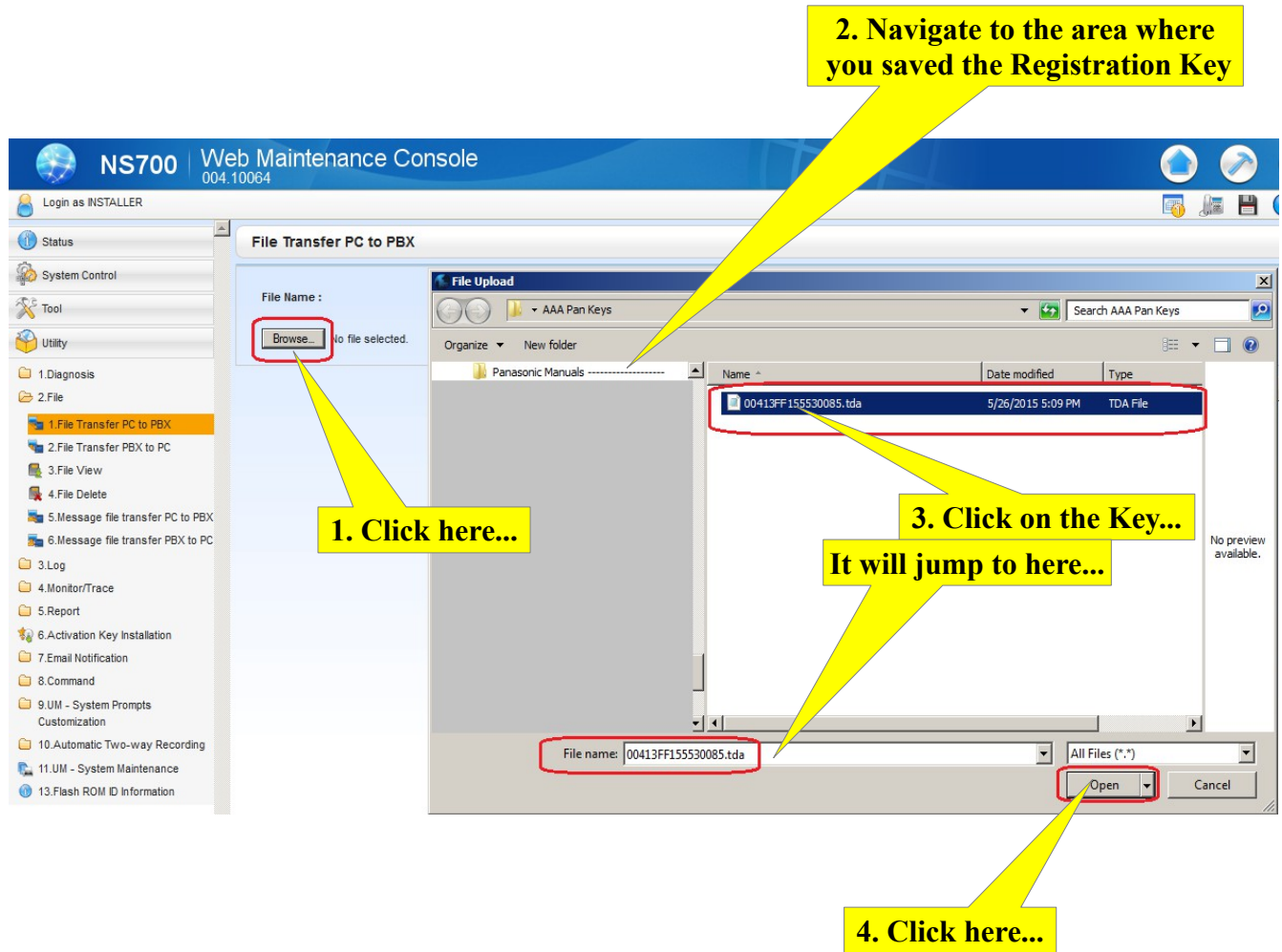
## Panasonic KX-NS700 How to Enter Registration Key Telquest Tech Support

**Download your Registration Key and save it somewhere easy to find.**

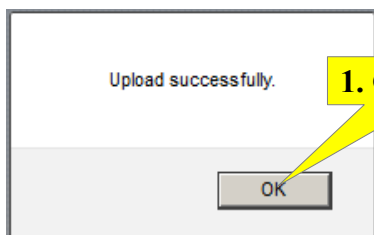
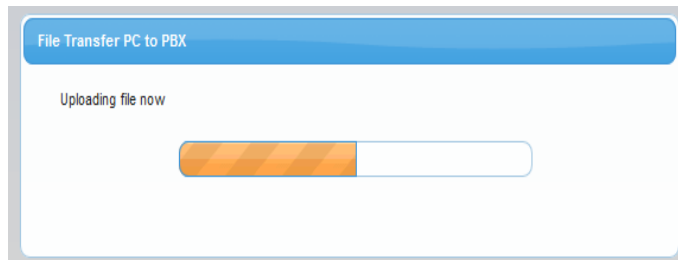
**Open a web browser (DO NOT use Internet Explorer) and navigate to the KSU.**

**Use Firefox if possible.**





You should see the progress bar indicate that the File Transfer is taking place.



1. Click here...



2. Save it...

This indicates that you are done.

Once the Save is complete log out of the KSU.

**Very Important Note:** ←  
**Power the KSU off for about 15 seconds and then back on.**

Now, log into into the KSU.

You should not see the Flash ROM screen any longer.

The New Version Number appears here...

This indicates that the system is now Registered.

You will not see 004.22015  
You will see the Version you installed

